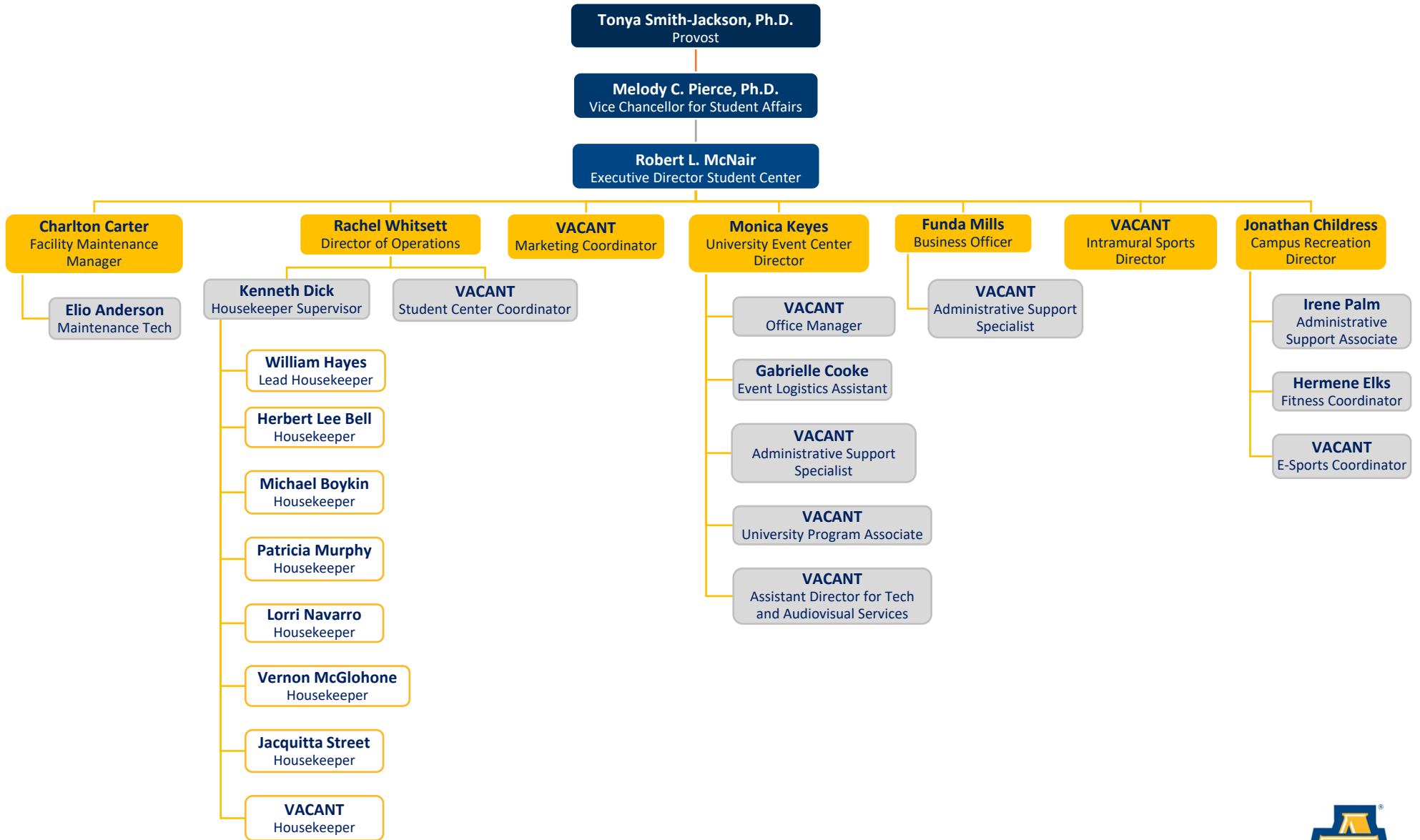


North Carolina A&T State University Student Center Organizational Chart



North Carolina A&T State University Student Center Organizational Chart

- **Provost**, Tonya Smith-Jackson, Ph.D.
- **Vice Chancellor for Student Affairs**, Melody C. Pierce Ph.D., *Reports to Provost*
- **Executive Director Student Center**, Robert L. McNair, *Reports to Vice Chancellor for Student Affairs*
- **Facility Maintenance Manager**, Charlton Carter, *Reports to Executive Director Student Center*
 - **Maintenance Tech**, Elio Anderson, *Reports to Facility Maintenance Manager*
- **Director of Operations**, Rachel Whitsett, *Reports to Executive Director Student Center*
 - **Housekeeper Supervisor**, Kenneth Dick, *Reports Director of Operations*
 - **Lead Housekeeper**, William Hayes, *Reports to Housekeeper Supervisor*
 - **Housekeeper**, Herbert Lee Bell, *Reports to Housekeeper Supervisor*
 - **Housekeeper**, Michael Boykin, *Reports to Housekeeper Supervisor*
 - **Housekeeper**, Patricia Murphy, *Reports to Housekeeper Supervisor*
 - **Housekeeper**, Lorri Navarro, *Reports to Housekeeper Supervisor*
 - **Housekeeper**, Vernon McGlohone, *Reports to Housekeeper Supervisor*
 - **Housekeeper**, Jacquitta Street, *Reports to Housekeeper Supervisor*
 - **Housekeeper**, Vacant, *Reports to Housekeeper Supervisor*
 - **Student Center Coordinator**, Vacant, *Reports to Director of Operations*
- **Marketing Coordinator**, Vacant, *Reports to Executive Director Student Center*
- **University Event Center Director**, Monica Keyes, *Reports to Executive Director Student Center*
 - **Office Manager**, Vacant, *Reports to University Event Center Director*
 - **Event Logistics Assistant**, Gabrielle Cooke, *Reports to University Event Center Director*
 - **Administrative Support Specialist**, Vacant, *Reports to University Event Center Director*
 - **University Program Associate**, Vacant, *Reports to University Event Center Director*
 - **Assistant Director for Tech and Audiovisual Services**, Vacant, *Reports to University Event Center Director*
- **Business Officer**, Funda Mills, *Reports to Executive Director Student Center*
 - **Administrative Support Specialist**, Vacant, *Reports to Business Officer*
- **Intramural Sports Director**, Vacant, *Reports to Executive Director Student Center*
- **Campus Recreation Director**, Jonathan Childress, *Reports to Executive Director Student Center*
 - **Administrative Support Associate**, Irene Palm, *Reports to Director, Campus Recreation*
 - **Fitness Coordinator**, Hermene Elks, *Reports to Director, Campus Recreation*
 - **E-Sports Coordinator**, Vacant, *Reports to Director, Campus Recreation*